

Canon



**imageRUNNER
ADVANCE**

**4051 / 4045
4035 / 4025**

multifunction printer
black-and-white copy/print
color scan
compact design

OFFICE SOLUTIONS




advancing business





imageRUNNER ADVANCE





4051
4045
4035
4025

 Copy/Print/Send/Fax*/Store

 Up to 11" x 17"

 Up to 1200 x 1200 dpi

 Black-and-White Copy/Print

 Color Scan and Send

*Optional

**Requires Duplexing Automatic Document Feeder-AG1 on imageRUNNER ADVANCE 4035/4025 models.

Exceptional power

- > Advanced imageCHIP system architecture
- > 80GB HDD standard; up to 250GB HDD
- > 1.25GB RAM standard; 1.75GB RAM maximum

Impressive speed

- > Up to 51 ppm (4051), 45 ppm (4045), 35 ppm (4035), and 25 ppm (4025) (Letter)
- > Up to 51-ipm scanning at 300 dpi (BW, Color)**

High-volume paper handling

- > Up to 4,980-sheet maximum paper capacity
- > 16 lb. to 34 lb. Bond (cassettes, paper deck)
- > 14 lb. Bond to 80 lb. Cover (bypass)
- > Up to 11" x 17" paper size

Flexible in-line finishing options

- > Multiposition stapling, booklet-making, 2- and 3-hole punching
- > Internal finisher and punching with 50-sheet stapling

Enhanced collaboration

- > Advanced Box document sharing solution
- > Cloud Portal document sharing/printing solution
- > Standard UFR II Print
- > Standard Universal Send
- > Adobe® PostScript® 3™ and Adobe PDF formats
- > Scan/print via USB

imageRUNNER ADVANCE Essentials

- > imageRUNNER ADVANCE Desktop
- > imageRUNNER ADVANCE Tracker
- > Workflow Composer and Connectors

Strong environmental focus

- > ENERGY STAR® qualified
- > Reduction of CO₂ emissions in manufacturing process
- > Exceeds EU RoHS Directive standards

Streamlined functionality. Convenient efficiency. Intelligent value at its best.

A welcome addition

Now small departments and large workgroups can enjoy the outstanding performance and versatility of the Canon imageRUNNER ADVANCE Series. Incorporating a cutting-edge platform, the imageRUNNER ADVANCE 4051/4045/4035/4025 digital monochrome models deliver advanced solutions to help your business operate far more productively.

A great return on investment

These sleek, compact models make it simple to produce professional-quality documents cost-effectively. Black-and-white images are richly detailed, and robust, space-saving accessories make finishing documents easy. And with their smooth integration into your network, these models encourage collaboration and drive efficiency. Engineered for utmost reliability, they offer maximum uptime and help you control costs.

User-centric from all viewpoints

Users will be delighted by the friendly interface and their ability to access functions with ease. IT administrators will applaud the centralized device management solutions and vigorous security features. And business owners will value automated workflow options that boost productivity and help reduce costs.

Breakthrough efficiency

The imageRUNNER ADVANCE 4000 Series delivers world-class efficiency with amazing ease. Now you can streamline the exchange of information throughout your organization. You can readily perform tasks right from your PC, simplify complicated tasks with one-step operations, and perform multiple jobs concurrently.

Even greener

Canon's commitment to protecting and sustaining the environment is stronger than ever. With the imageRUNNER ADVANCE Series, Canon has incorporated new green technologies from manufacturing to product features that further conserve energy and resources, reduce CO₂ emissions and heat, and help prevent pollution.

A truly advanced partner

Great partnerships deliver a strong competitive advantage. The imageRUNNER ADVANCE 4000 Series models offer cutting-edge tools and features that allow you to do better work more efficiently. This lets you focus on the powerful ideas that will advance your business—now and in the future.



Stylish performance. Intuitive operation. Standout quality. The total package.

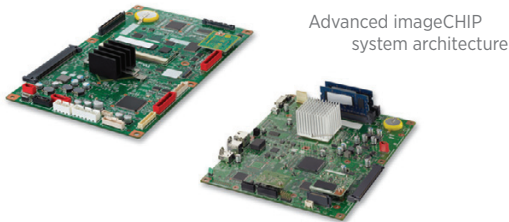
A beautiful way to work

The imageRUNNER ADVANCE 4000 Series models are designed to offer a multitude of resources in a space-saving footprint. The warm, natural color palette integrates seamlessly into any office environment, and the smartly designed TFT control panel is comfortable and easy to use.

Power for exceptional performance

Accomplish multiple tasks concurrently with the exceptional speed your work demands. These imageRUNNER ADVANCE models incorporate Canon's Advanced imageCHIP system architecture, which uses two processors to deliver outstanding multitasking performance.

The image processor board works with the scanner, adjusts image size, and ensures superb image quality and super-fast processing. The information processor board controls the user interface and coordinates device networking and connectivity.



Simpler, more intuitive operation

Completely redesigned, the highly responsive, flexible user interface is all about simplicity and ease. The imageRUNNER ADVANCE 4000 Series models have a range of features that allow users to accomplish much more in much less time.

Size. The large, full-color 8.4" high-resolution TFT screen boasts wide viewing angles and exceptional clarity.

Menus. Two menus streamline your workflow. Just a stroke of the Main Menu keys gives you instant access to system functions. The Quick Menu powers productivity by allowing you to combine and access routine tasks at the touch of just one button.

Customization. Organize the onscreen buttons to fit the way you work by determining their number, size, and layout. And you can even select an on-screen background.

Preview. Save time and reduce errors by viewing files directly on the imageRUNNER ADVANCE system before you send or print them. Readily check JPEG, TIFF, and PDF files stored in Advanced Box or on memory media. Even scroll through pages within a file at an enlarged or reduced display size.

Tutorial. For users who have "how to" questions, these Canon imageRUNNER ADVANCE models have a tutorial button right on the screen. Quickly access simple, step-by-step instructions.



Main Menu

Customize the number, size, and layout of the function buttons, and select a background.



Quick Menu

Combine and access commonly performed tasks with just one button.

Wallpaper

Choose from a palette of background designs.

Walk-up convenience

The imageRUNNER ADVANCE 4000 Series is designed to make your work easier. Scan, print, or view files by scrolling through them right from your USB thumb drive. Expand connectivity options to include memory media such as an SD card or CompactFlash® card.* And with the optional keyboard, you can enter more data comfortably.



USB Memory Media

Keyboard

Keep running

With the imageRUNNER ADVANCE 4000 Series models, you're assured the ongoing productivity your business demands. Status notifications keep you ahead of the game, and toner and paper can be replaced on the fly. If the correct paper size or stock for a job is unavailable, the system can begin the next job without delay to help maximize uptime.



Toner bottle

Essential solutions

Canon has raised the bar on productivity and cost control. Introducing imageRUNNER ADVANCE Essentials—specially created solutions that seamlessly connect the MFP to the user. Now, right from their PCs, users can perform personal document workflow tasks. Productivity is enhanced by assigning complicated tasks to a single button. Administrators can track and manage use and even influence behavior. And with amazing ease, the imageRUNNER ADVANCE 4000 Series models can quickly link to your external systems.

A striking impression

Enjoy black-and-white image quality that truly stands out. True 1200 x 1200 dpi print resolution produces fine lines and crisp text, even at small font sizes. With 256 gradations, halftones are rendered in rich shades from the lightest gray to the deepest black. And the Auto Gradation Adjustment ensures that densities and halftones are set at the ideal levels.



*Requires optional equipment.

ADVANCED WORKFLOW

Impressive versatility. Smooth integration. Customized workflow. As business should be.

Accelerated performance

The imageRUNNER ADVANCE 4000 Series delivers the outstanding performance and versatility that small- to mid-size businesses require.

Scanner. The 100-sheet-capacity, auto duplex document feeder* readily converts color or black-and-white paper documents to digital files.

Send. Files move at an outstanding pace across the network with Universal Send and formats such as High Compression PDF/XPS, which significantly reduces color file sizes.

Startup. Shorter warm-up and faster first-copy times quickly get you up to speed.

Processing. Large files and complex print jobs are easily and rapidly processed with the latest system architecture.

Finishing. The choice of modular accessories—both in-line and internal—make document finishing professional and simple.

Smart productivity

With a wide range of software solutions, Canon gives your business the edge in saving time, lowering costs, and improving quality. The Workflow Composer utility can reduce multistep and frequently performed operations to the touch of one button on the Quick Menu. You can name interface buttons to match your business processes. And with Canon's MEAP® development platform, you're able to take advantage of added applications to extend your capabilities.



imageRUNNER ADVANCE Desktop

Right from your PC

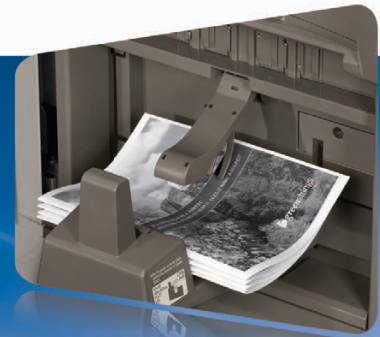
Whether from the imageRUNNER ADVANCE model or your own desk, you can have direct access to the functions that make your work easier. The imageRUNNER ADVANCE Desktop utility features a clear, comprehensive PC interface that transforms your computer into a central command station. Now you can perform personal document workflow tasks, such as archiving, merging, and distributing, all from your desktop with “drag-and-drop” simplicity. You can also search for documents with ease, and even monitor the status of your work from any location on the network.



Document Feeder



Inner Finisher



Booklet Finisher

Scan, store, and collaborate

Designed to streamline workflow and meet each user's needs, these models let you easily save, store, and access scanned documents in multiple locations. Simply select a destination and scan the original. Using built-in spaces like Mail Box and Advanced Box or external spaces such as memory media or another networked location, you can choose the most efficient way to work.

Advanced Box. Canon's latest built-in document sharing solution really helps multiple users collaborate. Files can be stored in Advanced Box shared folders and accessed from multiple locations, including PCs and other networked imageRUNNER ADVANCE systems. When privacy is required, files can be saved to personal folders. And with the ability to preview files on the system, you'll work more effectively.

Document distribution beyond the ordinary

The imageRUNNER ADVANCE 4000 Series models make it easy to share and distribute documents widely across a network—or even through the clouds.

Cloud Portal. Now you can transform the way you access files with Canon Cloud Portal for imageRUNNER ADVANCE. This free application connects the imageRUNNER ADVANCE office system directly to Microsoft® SharePoint® Online and Google Docs™ Cloud Services, without the need for extra hardware or software.



Universal Send Screen

Color Universal Send. In one simple operation, you can scan color and black-and-white documents and then distribute them to multiple destinations, such as e-mail and fax addresses and network folders. Now Universal Send offers an expanded range of file formats, including High Compression PDF/XPS, Adobe PDF Reader Extensions, Searchable PDF, and Encrypted PDF.

Fax. Readily handle large volumes of fax documents and keep information flowing. These imageRUNNER ADVANCE models support up to four fax lines and have the ability to share the fax function of another imageRUNNER ADVANCE model on the same network. With the Job Forwarding feature, incoming faxes can be automatically routed to other systems, users, or destinations, including the Advanced Box file-sharing space.

Versatile print solutions

Canon's proprietary UFR II print technology is standard with these models. Options including Adobe PostScript 3 and PCL 5e/6 are also supported.

And with Canon's latest Driver Configuration Tool, you'll gain great control over your print environment. Not only is it easy to set specific defaults and custom profiles, but you can also control costs by selecting easy-to-use features such as duplex printing. You can even enhance security by opting for a forced watermark.

Protected workflow. Secure access. Seamless control. Freedom to focus on your business.

Robust security

The imageRUNNER ADVANCE 4000 Series models offer multi-layered solutions that help businesses meet their goals of privacy and protection yet keep work flowing. From installation to retirement, this Series has solutions that safeguard your confidential information and help support security compliance.

Access Management System. Limit access by user, group, or role. You can even limit access only for specific functions such as Universal Send.

Document Scan Lock and Tracking.* Embed hidden tracking information in a document to restrict unauthorized copying or scanning and to track the origin.

Adobe® LiveCycle® Rights Management ES 2.5 Integration. Protect access to documents at every stage. After documents are scanned, specify security policies and select authorized recipients.

Trusted Platform Module. Safeguard vulnerable settings, such as passwords, with a security chip featuring tamper-resistant hardware.

Data Encryption and Erase Options. Disguise information before it's written to the hard drive, and permanently remove it by overwriting when the job is complete.

Removable Hard Disk Drive. With this option, the Hard Disk Drive can be removed and placed in a secure location when not in use.

Centralized control

Control individual models. Remarkably intuitive, the Remote User Interface gives you centralized control right from your desktop. With this easy-to-use Web-based interface, you can access the information for any individual device. Check supply levels, monitor jobs, and stay completely informed.

A fleet of systems. Canon continues to simplify administration while helping maximize productivity and efficiency. The easy-to-install, highly scalable imageWARE Enterprise Management Console offers one central point of control for all Canon and third-party networked devices across your organization. Uptime is maximized by your ability to monitor jobs and supply levels—even receive e-mail notifications if toner is low or a tray is out of paper. And now with Remote Shutdown, one device or an entire fleet can be shut down remotely, saving both time and energy consumption.

Security Feature Overview

Document Security

- Document Scan Lock and Tracking*
- Adobe LiveCycle Rights Management ES 2.5 Integration
- Encrypted Secure Print
- Watermark/Secure Watermark
- Copy Set Numbering
- Encrypted PDF
- Digital Signature PDF
- Fax Forwarding
- Fax Destination Confirmation



Mail Server Security

- POP Authentication before SMTP
- SMTP Authentication



Network Security

- IP/MAC Address Filtering
- SSL Encryption
- Network Application On/Off
- USB Port On/Off
- Destination Restriction
- IPsec
- IEEE 802.1x (Wire/Wireless)

Data Security

- Trusted Platform Module
- HDD Data Erase and Encryption
- Advanced Box Security
- Mail Box Password Protection
- Job Log Conceal
- Removable Hard Disk Drive



Logging/Auditing Security

- imageWARE Secure Audit Manager

Authentication

- Department ID/Control Card Systems
- Device Level Log-in (SSO-H)
- Access Management System (AMS)
- Function Level Log-in via AMS
- Authorized Send
- Smart Card Authentication

Device Security

- IEEE 2600.1 Common Criteria Certification

Note: Some features may be optional.

ADVANCED PERFORMANCE

Superb quality. Reliable performance. Centralized tracking.
A partner you can count on.



Rise above the crowd

Make a great impression with professional-quality reports, manuals, newsletters, and contracts. The imageRUNNER ADVANCE 4000 Series gives you the ability to generate high-quality documents in-house. Produce crisp black-and-white images and finish documents effortlessly while enjoying outstanding convenience and impressive cost savings.

Easy integration

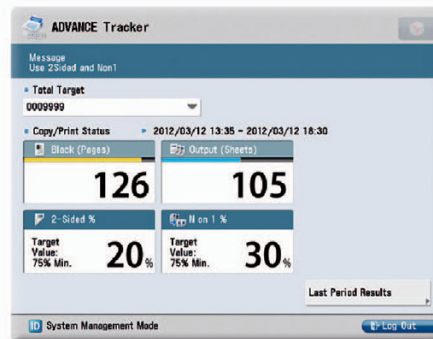
You'll appreciate the seamless integration of these models into your network. Readily save or retrieve files from a networked PC or another imageRUNNER ADVANCE model. If a model is busy, scan or print documents from another on the network. With Remote Fax you can share the fax function of another imageRUNNER ADVANCE system, reducing the cost of maintaining multiple fax devices and lines. Improved connector and link support enhances communication with existing systems and integrates with those you acquire in the future.

Peace of mind

Canon incorporates signature reliability. Because the imageRUNNER systems offer remote service monitoring, automated dispatching, a synchronized hard drive backup, and on-the-fly replacement of supplies, users can count on virtually nonstop operation. And with access to the latest technology and simple, clear upgrades, you can power through your jobs, giving you more time to devote to other business areas.

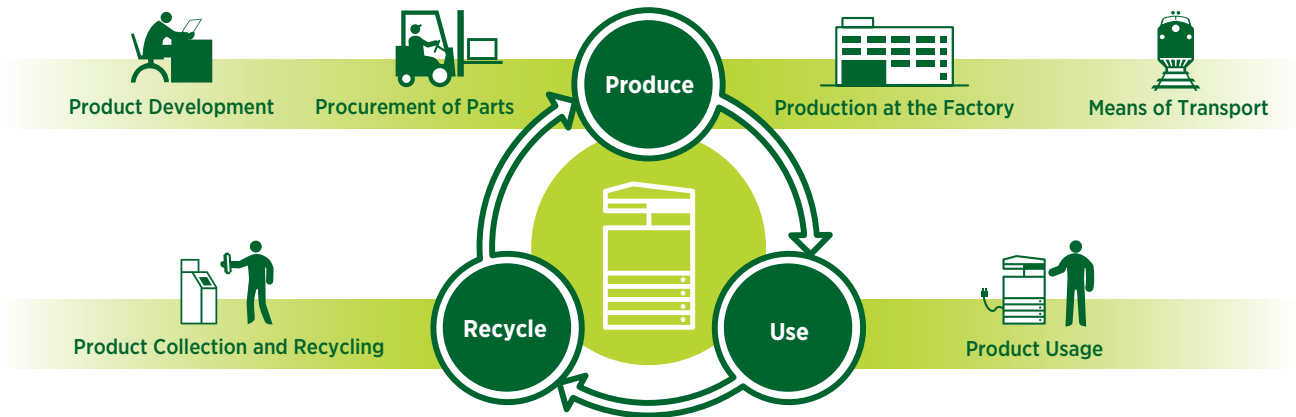
A positive bottom line

Cost savings are more crucial than ever. Now with Canon's imageRUNNER ADVANCE Tracker* utility, you have the power to identify, evaluate, and manage all copy, print, scan, and fax usage. Allocate costs by department, project, or client. Encourage double-sided printing right from your desktop to help reduce paper consumption. And with the ability to monitor multiple networked devices and receive automated e-mail reports, you'll stay firmly in control of the bottom line.



imageRUNNER ADVANCE Tracker screen on control panel

Solutions that propel your business while reducing our environmental footprint—and yours.



Reduction of CO₂ emissions

Through its Life Cycle Assessment (LCA) System, Canon has lowered CO₂ emissions by focusing on each stage of the product life cycle, including manufacturing, energy use, and logistics. These products are designed to be compact with less packaging to make transportation more efficient.

Eco-friendly design

Canon is making a difference through creative ecological thinking. The imageRUNNER ADVANCE models employ certain components fabricated with recycled plastic from retired products. Canon's innovative green technologies also include bio-based plastic, a plant-derived compound that replaces certain petroleum-based plastic parts.

A greener way to work

A visionary company, Canon knows that the world and the workplace need a greener workflow. The imageRUNNER ADVANCE Series delivers just that. Now organizations across the globe can seamlessly share and distribute digital documents. And because you can preview files prior to printing, changes can be made before committing toner to paper to avoid print errors. Administrators can even encourage duplex printing to help reduce waste and save paper throughout the enterprise.

Greater energy efficiency

From the inside out, the imageRUNNER ADVANCE Series is designed for high energy efficiency and stellar performance. The combination of Canon's fusing technologies and QF toner helps reduce overall energy consumption by minimizing heat and power requirements. The Series captures superb-quality images at impressive speeds while using less energy than ever. Canon's RAPID Fusing Technology reduces power use in digital multifunction systems over previous models.* And when devices are in Sleep Mode, power consumption is 1W or less. With advanced technologies present in each model, the Series meets ENERGY STAR standards.

Reducing pollution

All suppliers are required to meet Canon's stringent Green Procurement policy and environmental terms. This helps Canon exceed the toughest global standards, such as those set by the EU RoHS Directive, which controls/restricts the use of certain hazardous substances.

* imageRUNNER ADVANCE 4000 Series models compared to imageRUNNER 3200 Series models.

Optional accessories that add value to your business.

Finishing Options

Inner Finisher-D1 with 2/3-Hole Puncher-A1 and optional Inner Finisher Additional Tray-A1

- 1,000-sheet capacity***
- 2- and 3-hole punching
- Corner and double stapling, up to 50 sheets



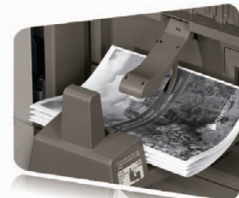
Staple Finisher-G1

- 2-tray, 3,000-sheet capacity
- Corner and double stapling, up to 50 sheets



Booklet Finisher-G1

- 2-tray, 3,000-sheet capacity
- Corner and double stapling, up to 50 sheets
- Booklet-making, up to 16 sheets



External 2/3-Hole Puncher-B2*

- 2- and 3-hole punching

Other Output/Finishing Options Inner 2-Way Tray-H1



Printer Options**

PCL Printer Kit-AN1

PS Printer Kit-AN1

Direct Print Kit (for PDF/XPS)-H1

Accessibility Options

Remote Operator's Software Kit-B1

Voice Operation Kit-C2

Voice Guidance Kit-F2

Braille Label Kit-F1

ADF Access Handle-A1



Paper Feeding Options

Cassette Feeding Unit-AF1

- 550-sheet x 2-cassette capacity
- 16 lb. to 34 lb. Bond
- Supports up to 11" x 17"

Paper Deck Unit-B2

- 2,700-sheet capacity
- 16 lb. to 34 lb. Bond
- Supports letter-sized paper

Other Paper Feeding Options

Envelope Feeder Attachment-D1

- 50-sheet capacity
- Supports COM10 No. 10, Monarch, DL, ISO-C5, ISO-B5



Security Options

Universal Send Security Feature Set-D1

Universal Send Digital User Signature Kit-C1

Encrypted Secure Print-D1

Secure Watermark-B1

Document Scan Lock Kit-B1†

Data Erase Kit-C1

HDD Data Encryption and Mirroring Kit-C4

Removable HDD Kit-AF1

Note: For additional options and specifications, please refer to the back page.

* Requires Staple Finisher-G1 or Booklet Finisher-G1.

** UFR II standard.

*** 600-sheet capacity when Inner Finisher Additional Tray-A1 is attached.

† Check with your Canon Authorized Dealer for availability.

Product Specifications

Main Unit

Operation Panel	
8.4" SVGA Full-color, TFT Screen	
Memory	
Standard:	1.25GB RAM
Maximum:	1.75GB RAM
Hard Disk Drive	
Standard:	80GB
Maximum:	250GB
Network Interface Connection	
Standard:	10/100/1000Base-TX
Optional:	Wireless LAN (IEEE 802.1x)
Other Interface	
Standard:	USB 2.0 (Host)x2, USB 2.0 (Device)
Optional:	Device Port [USB 2.0 (Host)x2], Copy Control Interface
Copy/Print Speed (Letter)	
4051:	Up to 51 ppm
4045:	Up to 45 ppm
4035:	Up to 35 ppm
4025:	Up to 25 ppm
First-Copy-Out Time (Letter)	
4051:	3.7 Seconds or Less
4045/4035:	3.8 Seconds or Less
4025:	5.2 Seconds or Less
Paper Sources (20 lb. Bond)	
Standard:	Dual 550-sheet Cassettes 80-sheet Stack Bypass
Maximum:	4,980 Sheets
Output Paper Capacity (20 lb. Bond)	
Standard:	250 Sheets (Inner Tray)
Maximum:	3,100 Sheets (with Staple Finisher or Booklet Finisher)
Output Paper Sizes	
Cassette 1:	Legal, Letter, Letter-R, Statement-R, Executive
Cassettes 2/3/4:	11" x 17", Legal, Letter, Letter-R, Statement-R, Executive, Custom Size [5-1/2" x 7-1/8" to 11-3/4" x 17" (40mm x 182mm to 297mm x 431mm)]
Bypass:	11" x 17", Legal, Letter, Letter-R, Statement-R, Executive, Custom Size [3-7/8" x 5-7/8" to 11-3/4" x 17" (99mm x 148mm to 297mm x 431mm)]
Acceptable Paper Weights	
Cassettes:	16 lb. Bond to 34 lb. Bond (60 to 128g/m ²)
Bypass:	14 lb. Bond to 80 lb. Cover (52 to 220g/m ²)
Warm-up Time	
From Power On:	38 Seconds or Less
From Sleep Mode:	10 Seconds or Less
Power Requirements/Plug	
4051:	120V AC 60Hz, 10.4A/ NEMA 5-15P
4045/4035:	120V AC 60Hz, 9.3A/ NEMA 5-15P
4025:	120V AC 60Hz, 7A/ NEMA 5-15P
Dimensions (H x W x D)	
4051/4045:	35-1/2" x 22-1/4" x 27-7/8" (909mm x 565mm x 708mm)
4035/4025:	30-1/4" x 22-1/4" x 27-5/8" (769mm x 565mm x 700mm)
Installation Space (W x D) (when the Multi-Purpose Tray is extended)	
4051/4045:	35-1/2" x 27-7/8" (909mm x 708mm)
4035/4025:	34-1/2" x 27-5/8" (876mm x 700mm)

Weight	
4051/4045:	Approximately 172 lb. (77.9kg)*
4035/4025:	Approximately 154 lb. (70kg)*
Toner (Estimated Toner Yield @ 6% Coverage)	
4051/4045:	34,200 Images
4035/4025:	30,200 Images

Image Reader Unit	
Scan Resolution	
Up to 600 x 600 dpi**	
Acceptable Originals (Glass)	
Sheet, Book, 3-Dimensional Objects [up to 4.4 lb. (2kg)]	
Maximum Original Size	
Up to 11" x 17"	

Document Feeder	
Scan Method	
Duplexing Automatic Document Feeder (Standard on 4051/4045; Optional on 4035/4025)	
Acceptable Originals	
Paper Sizes:	11" x 17", Legal, Letter, Letter-R, Statement
Scan Speed (BW/Color; Letter)	
Simplex:	51/51 ipm (300 dpi) 51/30 ipm (600 dpi)**
Paper Capacity (20 lb. Bond)	
100 Sheets	

Print Specifications	
Engine Resolution	
1200 x 1200 dpi	
PDL Support	
Standard:	UFR II
Optional:	PCL 5e, PCL 6, Adobe PS 3
Print Driver Supported OS	
UFR II, PS 3:	Windows® (XP/Windows Vista®/7/Server 2003/Server 2008/Server 2008 R2, Small Business Server 2011), Windows Terminal Servers (2000/Server 2003/Server 2008/Server 2008 R2), Microsoft® Failover Cluster (Windows 2000 Server/Server 2003/Server 2008 R2/Server 2008/Server 2008 R2), Citrix (Presentation Server 4.5, XenApp 5.0/6.0, XenDesktop 2.0/2.1/3.0/4.0/5.0), VMware (vSphere 4), SAP (UFR II only)
PCL 5e/6:	Windows (2000/XP/Windows Vista/7/Server 2003/Server 2008/Server 2008 R2, Small Business Server 2011), Windows Terminal Servers (2000/Server 2003/Server 2008/Server 2008 R2), Citrix (Presentation Server 4.5, XenApp 5.0/6.0, XenDesktop 2.0/2.1/3.0/4.0/5.0), VMware (vSphere 4), SAP

Print Driver Supported OS	
UFR II, PS 3:	Windows® (XP/Windows Vista®/7/Server 2003/Server 2008/Server 2008 R2, Small Business Server 2011), Windows Terminal Servers (2000/Server 2003/Server 2008/Server 2008 R2), Microsoft® Failover Cluster (Windows 2000 Server/Server 2003/Server 2008 R2/Server 2008/Server 2008 R2), Citrix (Presentation Server 4.5, XenApp 5.0/6.0, XenDesktop 2.0/2.1/3.0/4.0/5.0), VMware (vSphere 4), SAP (UFR II only)
PCL 5e/6:	Windows (2000/XP/Windows Vista/7/Server 2003/Server 2008/Server 2008 R2, Small Business Server 2011), Windows Terminal Servers (2000/Server 2003/Server 2008/Server 2008 R2), Citrix (Presentation Server 4.5, XenApp 5.0/6.0, XenDesktop 2.0/2.1/3.0/4.0/5.0), VMware (vSphere 4), SAP

Direct Print Support	
Standard:	TIFF, JPEG, EPS***
Optional:	PDF, XPS***

Universal Send Specifications	
Sending Method	
E-mail, I-Fax, File Server (FTP, SMB, WebDAV), Mail Box, Super G3 Fax (Optional)	
Communication Protocol	
File:	FTP (TCP/IP), SMB (TCP/IP), WebDAV
E-mail/I-Fax:	SMTP, POP3, I-Fax (Simple, Full)
File Format	
Standard:	TIFF, JPEG, PDF, PDF (Compact), PDF (Apply Policy), PDF (Optimize for Web), PDF/A-1b, XPS, XPS (Compact)
Optional:	PDF (Trace & Smooth), PDF/XPS (OCR), PDF (Encrypted), PDF/XPS (Digital Signature), PDF (Reader Extensions)

Fax Specifications	
Maximum Number of Connection Lines: 4	
Modem Speed	
Super G3:	33.6 Kbps
G3:	14.4 Kbps
Compression Method: MH, MR, MMR, JBIG	
Sending/Recording Size	
Statement to 11" x 17"	

Store Specifications	
Mail Box (Number Supported)	
100 User Inboxes, 1 Memory RX Inbox, 50 Confidential Fax Inboxes	
Advanced Box	
Available Disk Space:	Approximately 10GB (Standard HDD), 113GB (250GB HDD)
Communication Protocol: SMB or WebDAV	
Supported Client PC:	Windows (2000/XP/7, Windows Vista)
Memory Media	
Standard:	USB Memory
Optional:	SD, SDHC, CompactFlash, Memory Stick, Microdrive

Security Specifications	
Standard	
Department ID Management, Single Sign-On H, Access Management System (Device and Function Level Log-in), Secure Print, Trusted Platform Module, User Access Control of Advanced Box, Mail Box Password Protection, IPv6, Restricting Features (Restricting the Send Function, Restricting New Addresses on Address Book), SSL Encrypted Communication, SNMP v1/v3, MAC/IP Address Filtering, SMTP Authentication, POP Authentication before SMTP, HDD Format, IPsec, Adobe LiveCycle Rights Management ES 2.5 Integration	

Other Optional Accessories	
• Inner 2/3-Hole Puncher-A1	• Web Access Software-H1*
• Inner Finisher-D1 with 2/3-Hole Puncher-A1†	• Wireless LAN Board-B2**
• Utility Tray-A2	• USB Device Port-D1
• USB Keyboard	• Multimedia Reader/Writer-A2***
• Card Reader-F1□□	• Additional Memory Type A (512MB)¶
• Convenience Stapler-B1	• 2.5-inch/80GB HDD-C1■
• Universal Send Advanced Feature Set-E1	• 2.5-inch/250GB HDD-D1
• Super G3 Fax Board-AK1	• iR ADV Security Kit-B1 for IEEE 2600.1 Common Criteria Certification■■■
• Super G3 2nd Line Fax Board-AK1□□□	• Copy Control Interface Kit-A1
• Super G3 3rd/4th Line Fax Board-AE1††	• eCopy Suite
• Remote Fax Kit-A1†††	• Barcode Printing Kit-D1†††

* Includes DADF and consumables.
 ** Standard color scan support is for 100 dpi and 300 dpi. Up to 600-dpi scanning requires Additional Memory Type A (512MB).
 *** EPS and XPS cannot be printed directly from Memory Media or Advanced Box.
 □ Cannot be installed with Inner Finisher-D1 or 2/3-Hole Puncher-A1.
 □□ Requires Copy Card Reader Attachment Kit-B2.
 □□□ Requires Super G3 Fax Board-AK1.
 † Requires Super G3 Fax Board-AK1 and Super G3 2nd Line Fax Board-AK1, and Additional Memory Type A (512MB).
 †† Cannot be installed with Super G3 Fax Board-AK1.
 ††† Requires PCL Printer Kit-ANI.
 † Requires PS Printer Kit-ANI or Direct Print Kit (for PDF/XPS)-H1 when printing PDF files.
 †† Requires Expansion Bus-F2.
 ††† Requires USB Device Port-D1.
 ■ Required for 200-dpi, 400-dpi, and 600-dpi color scanning and 3/4 Line Faxing.
 ■■ 80GB HDD for Mirroring functionality only; cannot be used to increase storage.
 ■■■ Specified configurations and settings need to be applied to the device in order to achieve and maintain IEEE 2600.1 Common Criteria Certification. Contact your Canon Authorized Dealer for more information.

NOTE: Some accessories require additional equipment or may be prerequisites for other options. Some accessories cannot be installed simultaneously. Check with your Canon Authorized Dealer for details.



1-800-OK-CANON
www.usa.canon.com

Canon U.S.A., Inc.
One Canon Plaza
Lake Success, NY 11042

As an ENERGY STAR® Partner, Canon U.S.A., Inc. has determined that these products meet the ENERGY STAR guidelines for energy efficiency. ENERGY STAR and the ENERGY STAR mark are registered U.S. marks. CANON, IMAGERUNNER, MEAP, and the GENUINE logo are registered trademarks of Canon Inc. in the United States and may also be registered trademarks or trademarks in other countries. IMAGEWARE is a registered trademark of Canon U.S.A., Inc. in the United States and is a trademark of Canon Inc. in certain other countries. IMAGEANYWARE is a trademark of Canon. All other referenced product names and marks are trademarks of their respective owners and are hereby acknowledged. Some items may not be available at this time; please check for availability. All printer output images are simulated. Products are shown with optional accessories. Specifications and availability subject to change without notice. ©2012 Canon U.S.A., Inc. All rights reserved.

0155W296
0312-4051/4045/4035/4025-60M-LSP

